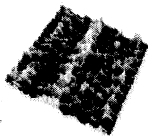


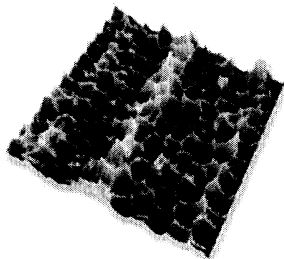
ULTRASHARP
CANTILEVERS & GRATINGS

Porous Aluminum PA01

[test structure]



Porous Aluminum PA01



AFM image of porous aluminum.
Probe tip curvature radius 2-3 nm.

Porous Aluminum Characteristics:

Partition thickness:	< 5nm
Cell pitch:	100 ± 10 nm
Pore depth:	490 ± 5 nm
Foil thickness:	50 μm
Sample area:	5 x 5 mm
Active area:	3 x 3 mm

A thin film of porous aluminum consists of hexagonal hollow cells formed by vertical partitions. The curvature radius of the spikes formed at the intersections of the partitions is about 2..3 nm.